



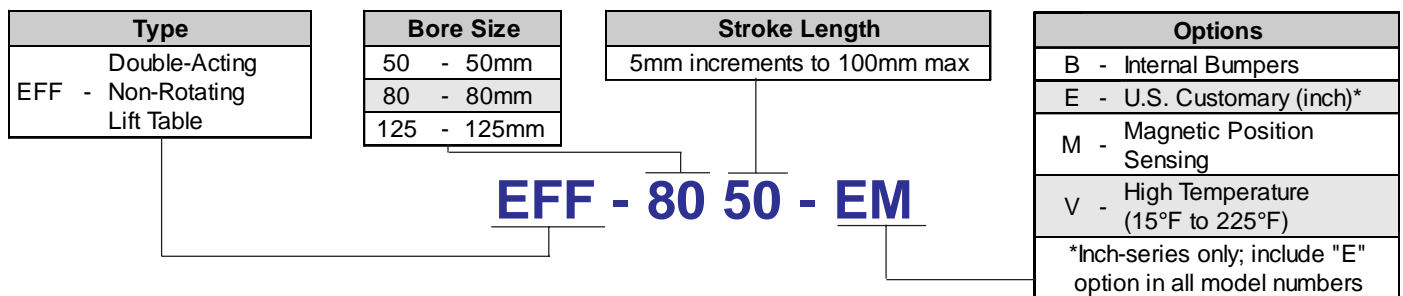
New Product Bulletin

Extruded Flat Lift Table

The Lift Table is an EF1-based, guided cylinder with four shafts for maximum rigidity. It is designed for lifting applications where other non-rotating cylinders cannot handle an overhung load and space is at a premium.

- Four-shaft support withstands offset loads and moments.
- Simple, efficient design provides economical alternative to other costly guided actuators.
- Joins the EF family of products, so shares all the same benefits--long service life, low friction operation, fast delivery.
- Convenient wide tooling mounting surface.
- Intended for vertical lifting applications (should not be mounted horizontally or with tooling plates facing down).

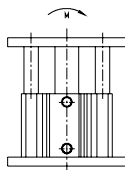
How to Order



List Prices

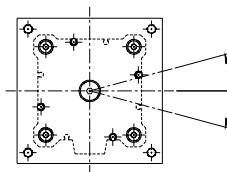
	50mm	80mm	125mm
Base	\$150.00	\$225.00	\$375.00
Add per 5mm	3.50	4.00	5.00
B	7.45	13.40	20.00
M	10.55	16.50	26.00
V	24.65	39.20	65.00

Engineering Specifications



Maximum Moment
Due to Side or Overhung Load

Bore	Max Moment
50mm	45 in-lb
80mm	125 in-lb
125mm	175 in-lb



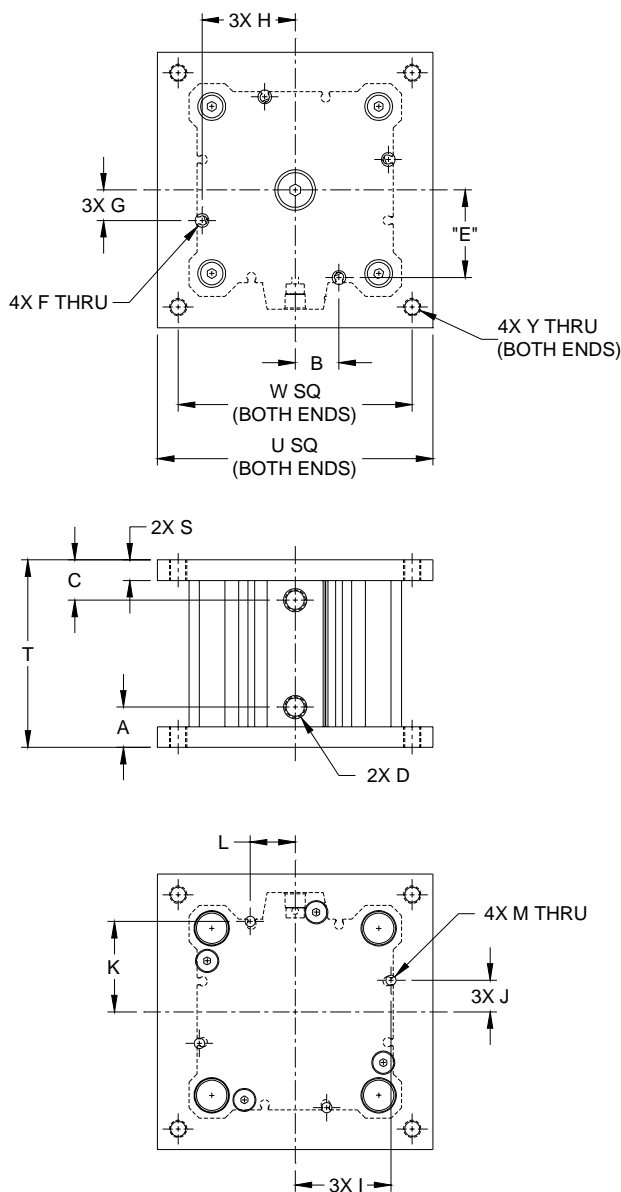
Non-Rotational Accuracy

Bore	Accuracy
50mm	+/- .17°
80mm	+/- .14°
125mm	+/- .11°

Materials of Construction

Component	Material
Cylinder Body	PTFE-impregnated hard anodized aluminum
Rear Mounting Plate	Anodized Aluminum
Guide Shafts	Hard Chrome Plated Stainless Steel
Guide Shaft Bearings	Composite Plastic
Tooling Plate	Anodized Aluminum
Piston Rod	Stainless Steel
Rod Guide	Aluminum Alloy
Seals	Nitrile (Fluoroelastomer optional)
Piston	Aluminum Alloy

Bimba Extruded Flat Lift Table



Dimensions (inches)

Bore	A	B	C	D	E	F	G	H	I	J	K	L	M	S	T	U	W	Y
80mm	0.58	0.56	0.58	1/8 NPT	1.06	0.25	0.58	1.05	1.09	0.60	1.11	0.58	0.25	0.25	See Table Below	3.00	2.50	#10-32 UNF
50mm	0.73	0.80	0.73	1/8 NPT	1.59	0.25	0.55	1.68	1.74	0.57	1.64	0.82	0.19	0.38		5.00	4.25	5/16-24 UNF
125mm	1.00	1.07	1.00	3/8 NPT	2.43	0.25	0.85	2.52	2.57	0.87	2.48	1.09	0.19	0.50		7.00	5.88	1/2-20 UNF

Overall Length, Dimension "T"

Bore	Without M Option	With M Option
50mm	Strokes: 0-24mm	Strokes: 0-21mm
	1.86	1.84
	Strokes: 25-100mm	Strokes: 22-100mm
80mm	0.88 + Stroke	1.01 + Stroke
	Strokes: 0-22mm	Strokes: 0-18mm
	2.14	2.14
125mm	Strokes: 23-100mm	Strokes: 19-100mm
	2.18 + Stroke	1.43 + Stroke
	Strokes: 0-37mm	Strokes: 0-30mm
125mm	3.03	3.06
	Strokes: 38-100mm	Strokes: 31-100mm
	1.58 + Stroke	1.88 + Stroke